

AWB010: Self Propelled Accommodation Jack up



Self propelled, self elevating work/accommodation barge. Equipped with two pedestal cranes, the large deck area provides a cost effective and efficient alternative to the traditional pipelay/derrick barges. The vessel provides a wide range of services, from coiled tubing and wireline operations to well intervention, riser installation and repair, pipeline repair, platform shot blasting and painting and diving support. Fully air-conditioned facilities for 71 persons, options to increase to 120 persons.

Built: 2016 China (Avic Weihai Shipyard)

Class: ABS

GRT/NRT: 2781/834

Deck strength: 5 T/m²

LOA: 66.90m (including helideck)

Hull length: 43.80m

Breadth (extreme): 39.00m

Depth: 5.20m

Draft (max): 3.20m

Clear Deck Area: 591m²

Legs: 3 x column configuration

Diameter: 2.7m

Length: 67.056m including spud cans

Lifting capacity: 1000 T per leg

Jacking system: Hydraulic ram and pin

Jacking speed: 12m per hr

Max Water Depth: 45m

Main Generators: 3 x Baudoin 450kw each
Main Engines: 2 x Weichai 960 kw each
Propulsion: 2 x Azimuth FPP
Bow Thruster: 1 x 450 kw electric tunnel thruster
Cruising/max speed: 4.4/4.8 knots

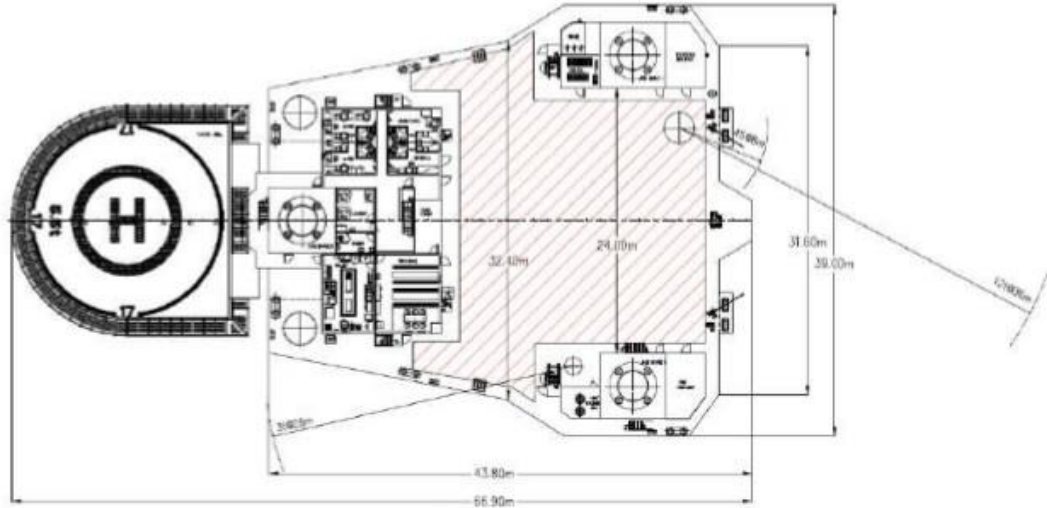
Fuel consumption: 133 l/hr jacked up under full operating conditions.
Sailing under own power: 475 l/hr

Fixed accommodation: 71 persons (option to increase to 120 persons)
Galley, mess hall, recreational room, office/meeting room, hospital. All fully air conditioned.

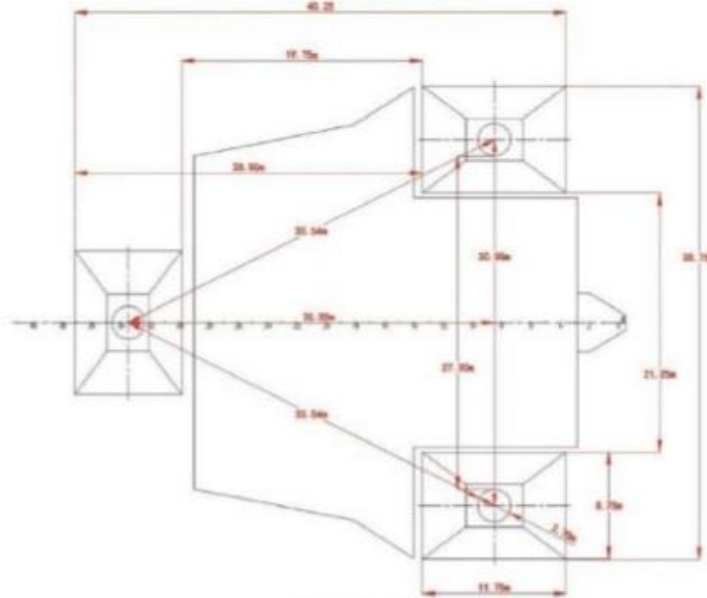
Helideck: 17.5m x 18m. Suitable for Bell 412 and 212.

Main crane: 45t@8m, 12 t@36m
Deck crane: 3t@28m

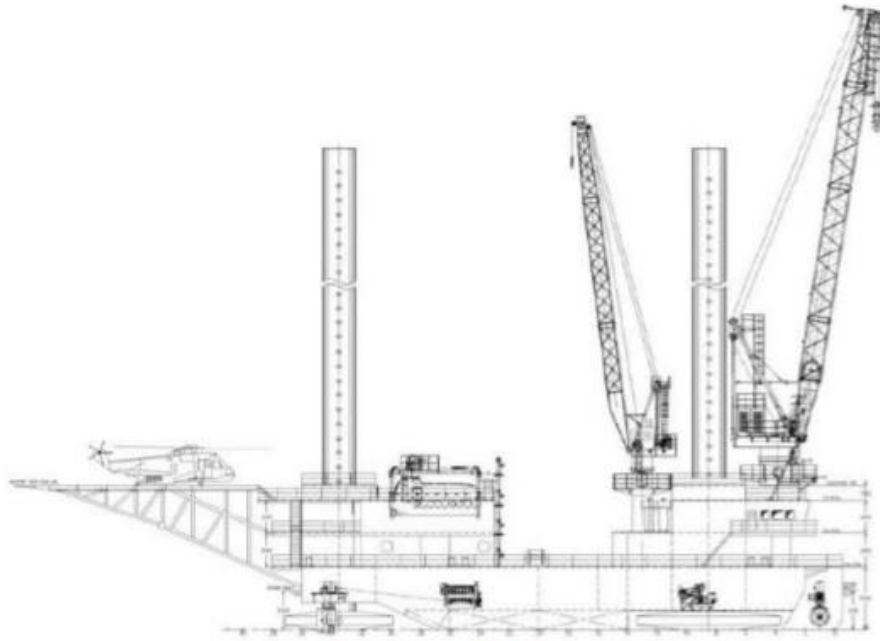




Main Deck Area



Foot Print



Outboard Profile

Environmental Criteria	Operating Condition 1	Operating Condition 2	Storm Survival Conditions	Crane Operating Conditions
Max. Water Depth [m]	45	35	20	45
Max. Wave Height [m]	5	5	7	4.5
Wave Period [s]	9.6	9.6	9.6	9.6
Wind [m/s]	25.8	36	51.5	20
Surface current [m/s]	1.45	1.45	2.057	1.45
Max. Air gap [m]	5	10	6	5
Penetration below mud line[m]	3	3	3	3

Conditions of Service—Elevated Conditions